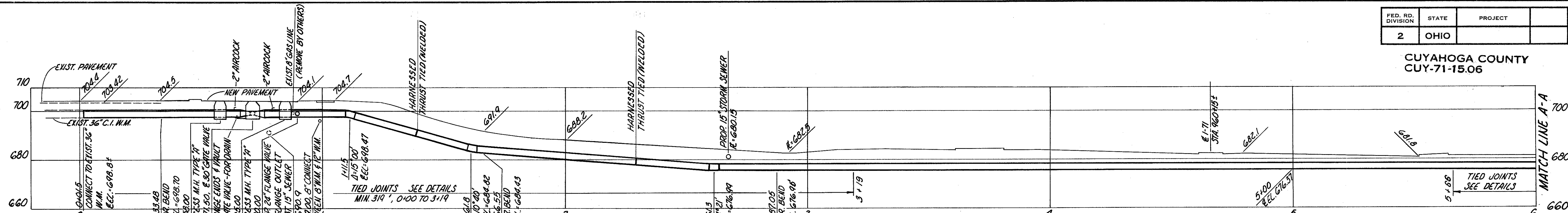
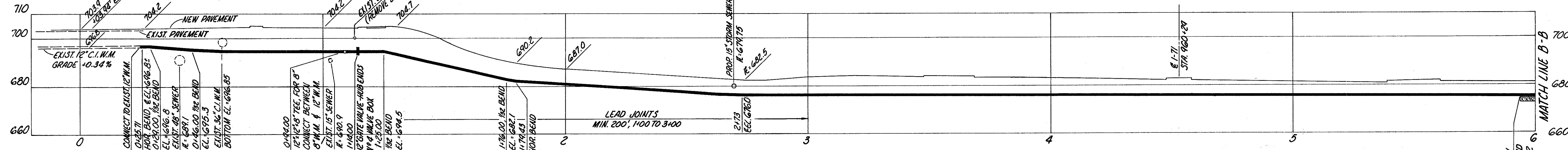


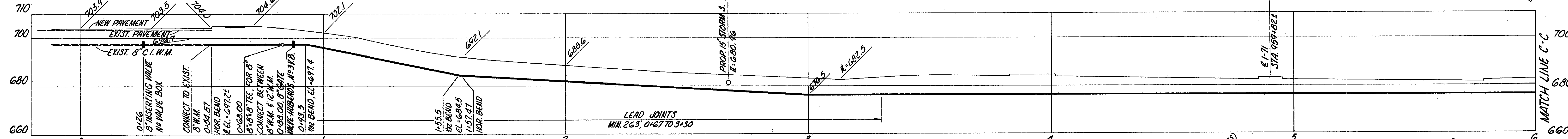
CUYAHOGA COUNTY  
CUY-71-15.06



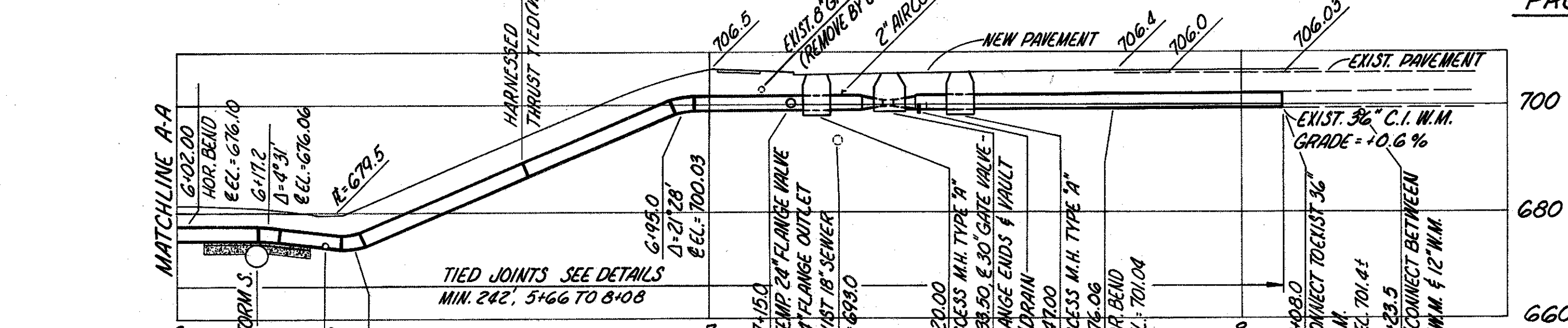
FULTON RD.  
PROFILE OF RELOCATED 36" WATER MAIN



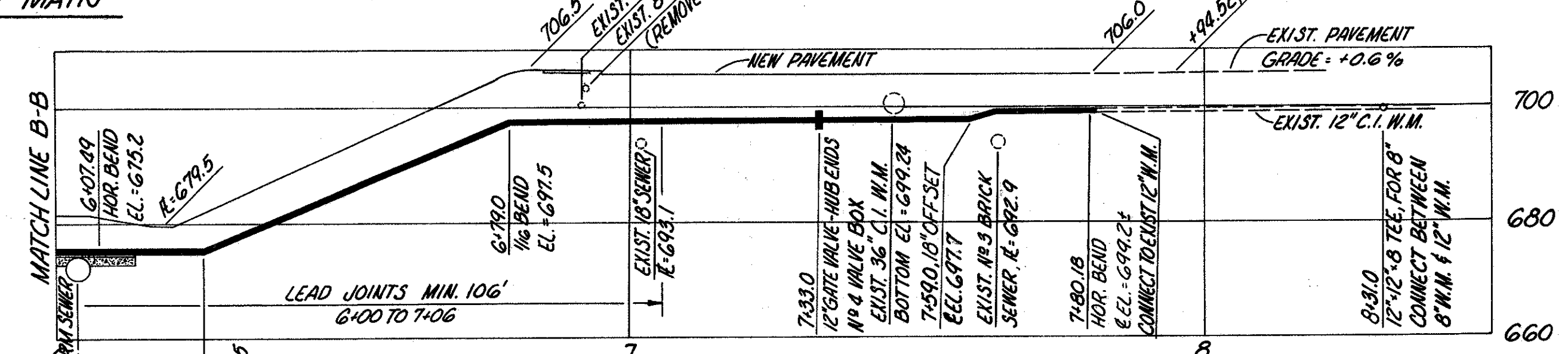
FULTON RD.  
PROFILE OF RELOCATED 12" WATER MAIN



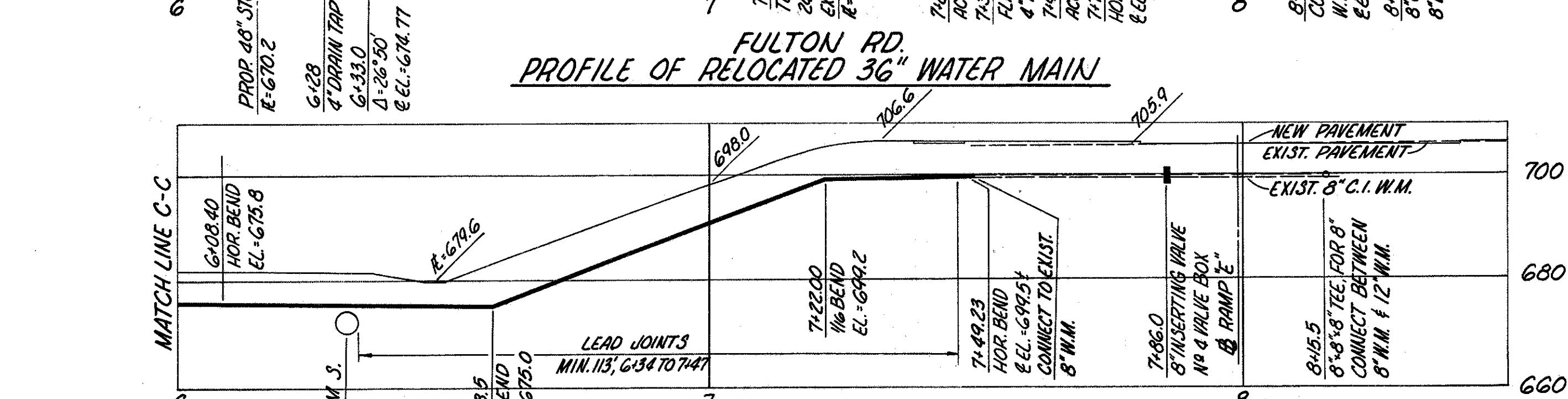
FULTON RD.  
PROFILE OF RELOCATED 8" WATER MAIN



FULTON RD.  
PROFILE OF RELOCATED 36" WATER MAIN



FULTON RD.  
PROFILE OF RELOCATED 12" WATER MAIN



FULTON RD.  
PROFILE OF RELOCATED 8" WATER MAIN

NOTES:  
8" WATER MAIN BETWEEN STATIONS 3+00 & 6+09, AND 12" WATER MAIN BETWEEN STATIONS 2+75 & 6+08 TO BE CEMENT LINED DUCTILE IRON PIPE, CLASS 25.  
36" WATER MAIN BETWEEN STATIONS 0+01.5 & 8+08 TO BE PRESTRESSED CONCRETE CYLINDER PIPE.

IST. HIGH SERVICE DISTRICT  
DEPARTMENT OF PUBLIC UTILITIES  
DIVISION OF WATER AND HEAT  
CLEVELAND, OHIO  
APPROVED MARCH 26, 1965  
V. M. DeMeltz DIRECTOR OF PUBLIC UTILITIES  
J. E. Stanton COMMISSIONER OF WATER AND HEAT  
Arnold Drake COMMISSIONER-DIVISION OF UTILITIES-ENGINEERING  
J. R. Connor ENGINEER OF CONSTRUCTION & SURVEYS  
William J. Swamy ENGINEER OF DESIGN

HORIZONTAL & VERTICAL SCALES: 1"=20'  
RACKOFF ASSOCIATES  
ENGINEERS COLUMBUS, OHIO  
MEDINA FREEWAY  
RELOCATION OF 36", 12" & 8" W.M.  
FULTON ROAD  
Designed Drawn Traced Checked Reviewed Date Revised

DESCRIPTION	PLOTTED	INCHES	CHECKED
TOPOGRAPHY	BY	DATE	DATE
PAVEMENT	BY	DATE	DATE
WATER MAIN	BY	DATE	DATE
SEWER	BY	DATE	DATE
STORM SEWER	BY	DATE	DATE
QUANTITIES	BY	DATE	DATE